

AquaJect®

Ground Breaking Aeration and Amendment Injection

Franchises available
in your area!



Aerate, inject, and amend soil for improved lawn and tree health



*Ideal for maintaining turf and trees
in peak condition!*

There's nothing else like AquaJect.® It gives professionals an all-in-one tool to efficiently improve soil conditions and plant health. Highly versatile injection technology delivers liquid and dry materials simultaneously.

- Aerates, injects, and feeds roots in one pass
- Injects almost any liquid or dry material
- Loosens compacted soil
- Fast, hassle-free, highly effective
- High earning potential, nothing else like it!

Applications

- Residential and commercial lawns and trees
- Field-grown nursery stock
- Ornamental plantings
- Flower beds
- Wherever soil health improves plant health

Franchise opportunity

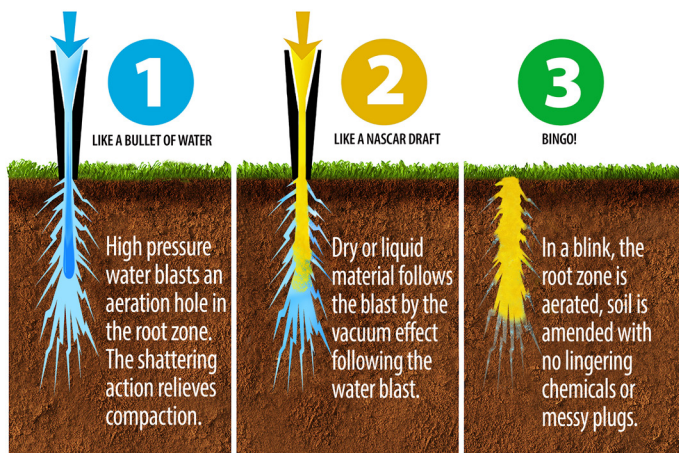
The AquaJect® machine is the foundation of the Advanced Agro™ franchise system, which provides equipment and materials to lawn and tree care services for soil aeration and amendment. AquaJect® is used on natural grass, trees, and shrubs. The exclusive technique features patent pending high-pressure water injection. AquaJect® is ideal for use in residential settings, and for commercial lawn and tree care in parks & recreation departments, educational facilities, business parks and campuses. Contact us about an Advanced Agro franchise, or about AquaJect® equipment. Call **215-444-0310**

AquaJect® is engineered and manufactured by DryJect® – leader in aeration and injection technology for over 20 years. Visit DryJect.com.

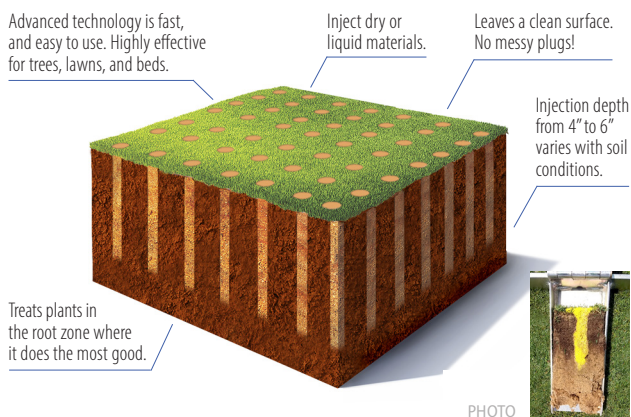
AquaJect®

Ground Breaking Aeration and Amendment Injection

How AquaJect® Works



AquaJect® Results



Colored sand is sometimes injected for demonstration purposes. The injection profile is unretouched.

- Now you can treat below the surface with state of the art injection technology.
- Lawn aeration with no messy plugs.
- Inject treatments and amendments in the root zone for enhanced results.
- No chemical sprays lingering on the surface.

Machine Specifications

Weight	810 lbs empty
Overall dimensions	43" H x 33.5" W x 85" L
Handle height, folded	57.8"
Power supply	Briggs 18HP Vanguard
GPM required	5 GPM at 30 psi
Injection pressure psi	2,500 - 3,000
Injection spacing options, in inches	4 x 3 (350 lbs* / 1,000 sq ft) 4 x 4 (260 lbs / 1,000 sq ft) 4 x 5 (200 lbs / 1,000 sq ft)
Metered hopper capacity	1 cu. ft. <1.5 mm particles
Large hopper capacity	2.6 cu. ft. <2.5 mm particles
Liquid reservoirs	4, individually controlled on each machine

Capacity: 1 gallon ea. of 4 reservoirs

Application Rates

Dry Product Rates

METERED HOPPER (For AquaPerk® or others): 0 to 5 lb / 1,000 sq. ft.

LARGE HOPPER

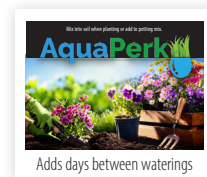
Dry sand: 0-350 lb / 1,000 sq ft.
Profile® Porous Ceramic: 0-130 lb/1,000 sq. ft.
(Profile weighs 38% of dry sand weight per 100 cu. ft.)

Liquid Product Rates

From 0 to 24 oz / 1,000 square feet per reservoir
(Four liquid reservoirs included)

Production Rates

AquaJect treats 1,000 square feet in from 6 to 13 minutes, which varies with spacing and property layout.



Just ask

Franchise is offered by Advanced Agro, LLC.

Advanced Agro™

TECHNOLOGIES ADVANCING AGRONOMICS™

GetAquaJect.com

215-444-0310 • Info@GetAquaJect.com
307 Lincoln Avenue, Hatboro, PA 19040

Affiliated with DryJect, Inc.